

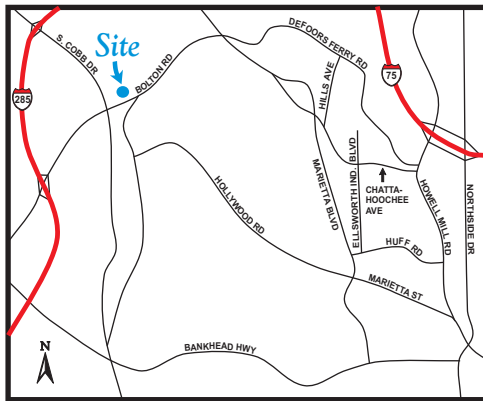
# AVAILABLE FOR LEASE

Atlanta's Fastest Growing Neighborhood



## 2030 Bolton Road Atlanta, GA 30318

Located at the Northeast Corner of Bolton Rd. & South Cobb Drive (Jackson Parkway)

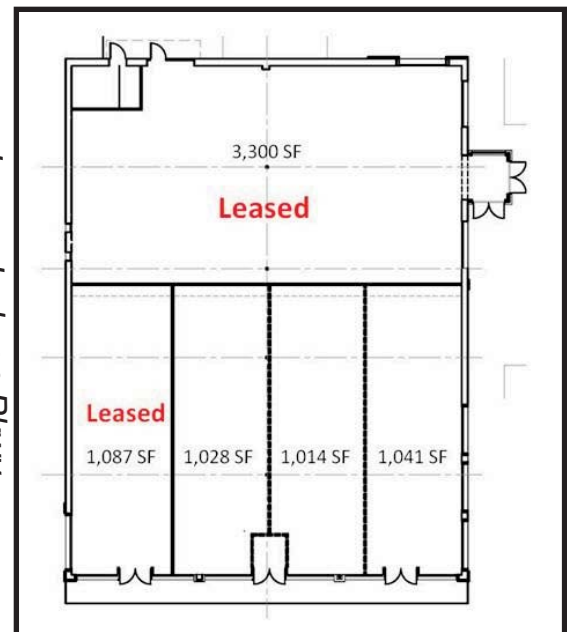


## Free-Standing Retail/Restaurant Building



Traffic Counts VPD: 30,360		
DEMOGRAPHICS		
1 Mile	2 Mile	3 Mile
<b>2007 Total Population</b>		
7,728	26,332	59,602
<b>2007 Average Household Income</b>		
\$41,429	\$55,962	\$77,864
<b>2007 # of Employees</b>		
4,050	15,827	32,871

- Ample Parking - Front/Rear/Sides
- One-Story Brick Building with New Contiguous 20 Town Home Development
- 1,014 SF up to 3,083 SF
- One Mile to I-285/South Cobb Drive
- Adjacent to 400 Home Development



Bolton Road



For more information please contact:

**Dave Smith**  
404/869-2605  
dave@joelandgranot.com

For complete details, please visit:  
www.joelandgranot.com

The information was obtained from sources we assume are reliable. We do not doubt its accuracy, however we do not guarantee it. No liability is assumed for errors and omissions. Information is subject to changes and withdrawal without notice.