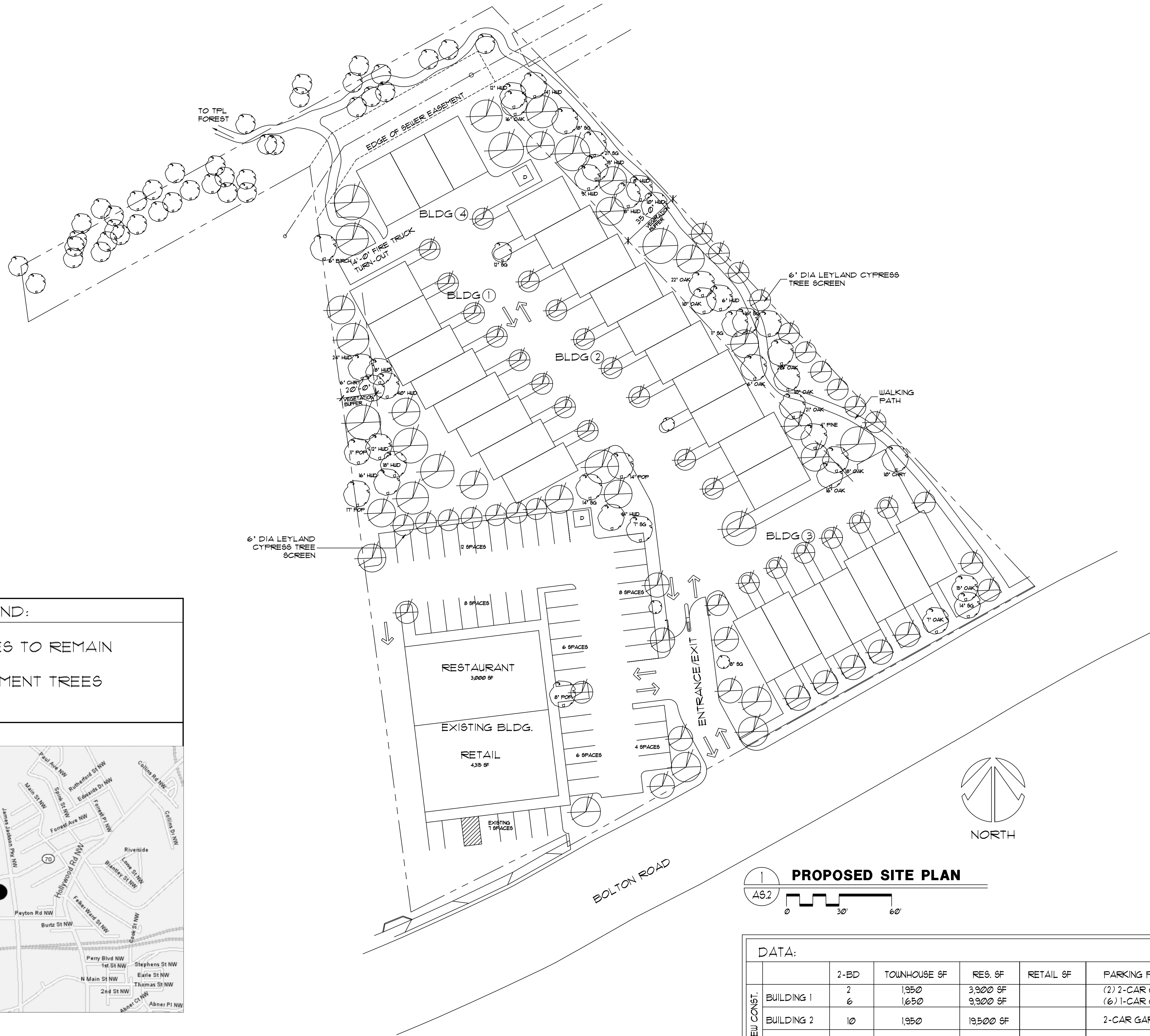


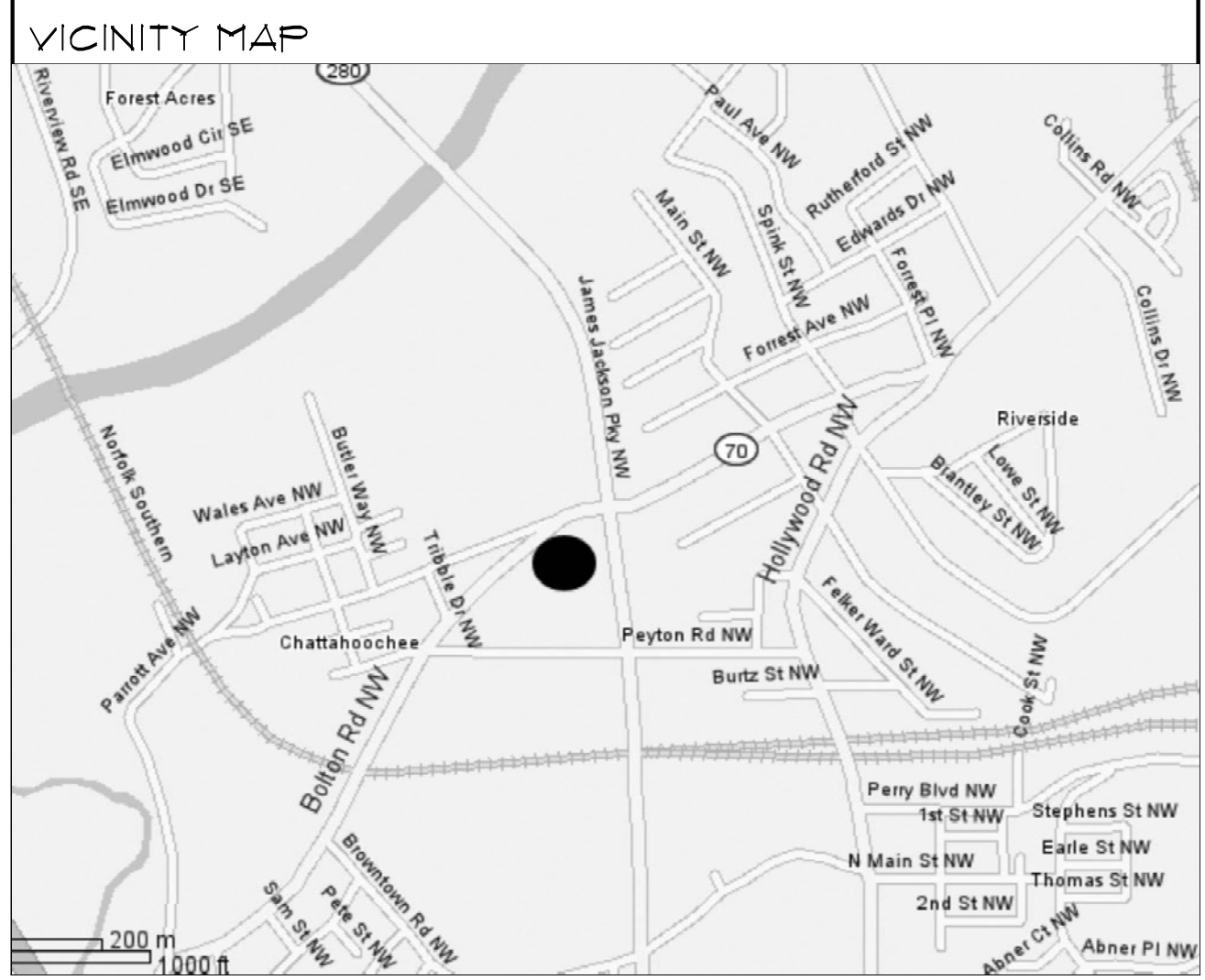
F  
E  
D  
C  
B  
A



**LANDSCAPE LEGEND:**

EXISTING TREES TO REMAIN

NEW REPLACEMENT TREES

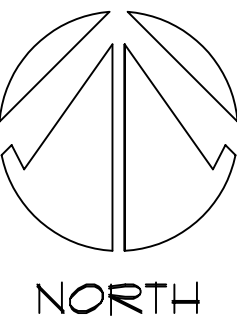


**PROPOSED SITE PLAN**

AS.2

**DATA:**

	2-BD	TOWNHOUSE SF	RES. SF	RETAIL SF	PARKING PROVIDED
NEW CONST.	BUILDING 1	2	1,950	3,900 SF	(2) 2-CAR GARAGE (6) 1-CAR GARAGE
	BUILDING 2	10	1,950	19,500 SF	2-CAR GARAGE
	BUILDING 3	1	1,650	11,550 SF	1-CAR GARAGE
	BUILDING 4	3	1,650	4,950 SF	1-CAR GARAGE
EXISTING	RESTAURANT/ RETAIL			7,315 SF	51
<b>TOTAL:</b>	<b>28</b>		<b>49,800 SF</b>	<b>7,315 SF</b>	<b>91 SPACES</b>



**PIMSLER · HOSS**  
ARCHITECTS INC  
RANDY E. PIMSLER, A.I.A.  
W. ALLEN HOSS, A.I.A.  
1383 SPRING STREET, NW SUITE B ATLANTA, GEORGIA 30309  
T (404) 875 1517 • F (404) 875 2475  
www.pimslers.com

**Bolton Road Retail**  
2000-2015 BOLTON ROAD  
ATLANTA, GEORGIA

PROJECT NO. 05151  
SCALE: 1" = 30'-0"

REV.	DATE	DESCRIPTION

PROPOSED SITE PLAN

**AS.2**

08.03.2005  
NOT RELEASED  
FOR CONSTRUCTION