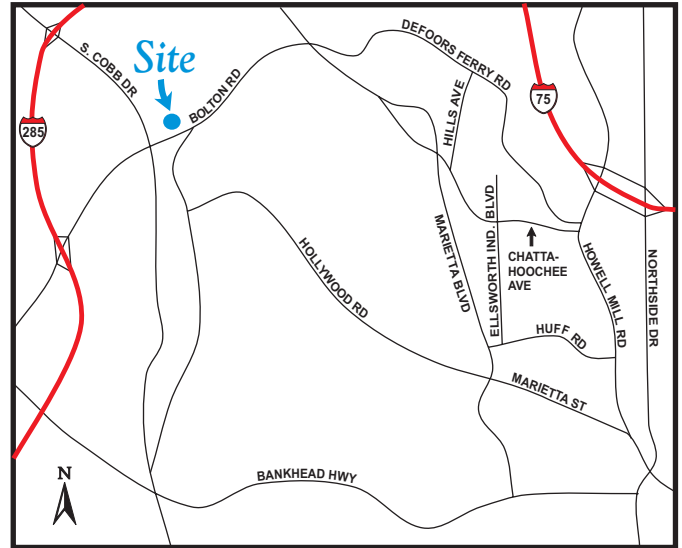
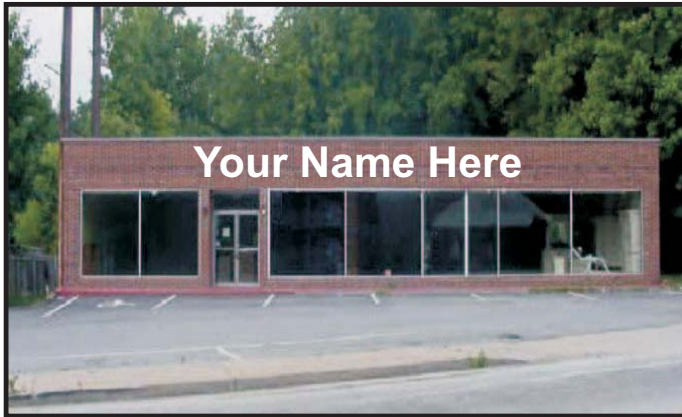


# AVAILABLE FOR LEASE

## 2030 Bolton Road

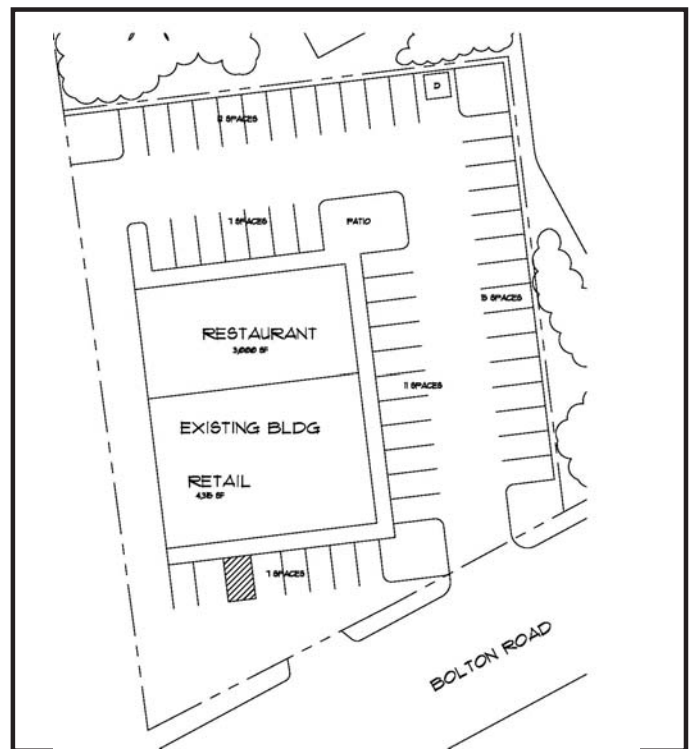
Atlanta, GA 30318

Located at the Northeast Corner of Bolton Rd.  
& South Cobb Drive (Jackson Parkway)



## 7,700 SF Building plus 2.1 Acres for Build-to-Suit

- Ample Parking - Front/Rear/Side
- Freestanding 1-Story Brick Building  
with contiguous 2.1 Acres for Expansion
- 100% HVAC
- Retail or Restaurant Use
- 1,200 SF up to 7,700 SF
- 1 Mile to I-285/S. Cobb Drive
- Traffic Count 17,000/vpd
- Adjacent to 52 Acre (400-Home)  
Mixed Use Development
- Outside Patio Available
- Build-to-Suit (2.1 Acres)



 <b>ALAN JOEL PARTNERS</b> <i>Commercial Real Estate Brokerage &amp; Investment</i>	962 Howell Mill Road, Suite 100 Atlanta, Georgia 30318 tel 404-869-2600 fax 404-869-2601
---	--

**Contact: Dave Smith (Direct Dial 404/869-2605)**

**email: [dsmith@alanjoelpartners.com](mailto:dsmith@alanjoelpartners.com)**

**For complete details, please visit [www.alanjoelpartners.com](http://www.alanjoelpartners.com)**

The information was obtained from sources we assume are reliable. We do not doubt its accuracy, however we do not guarantee it. No liability is assumed for errors and omissions. Information is subject to changes and withdrawal without notice.